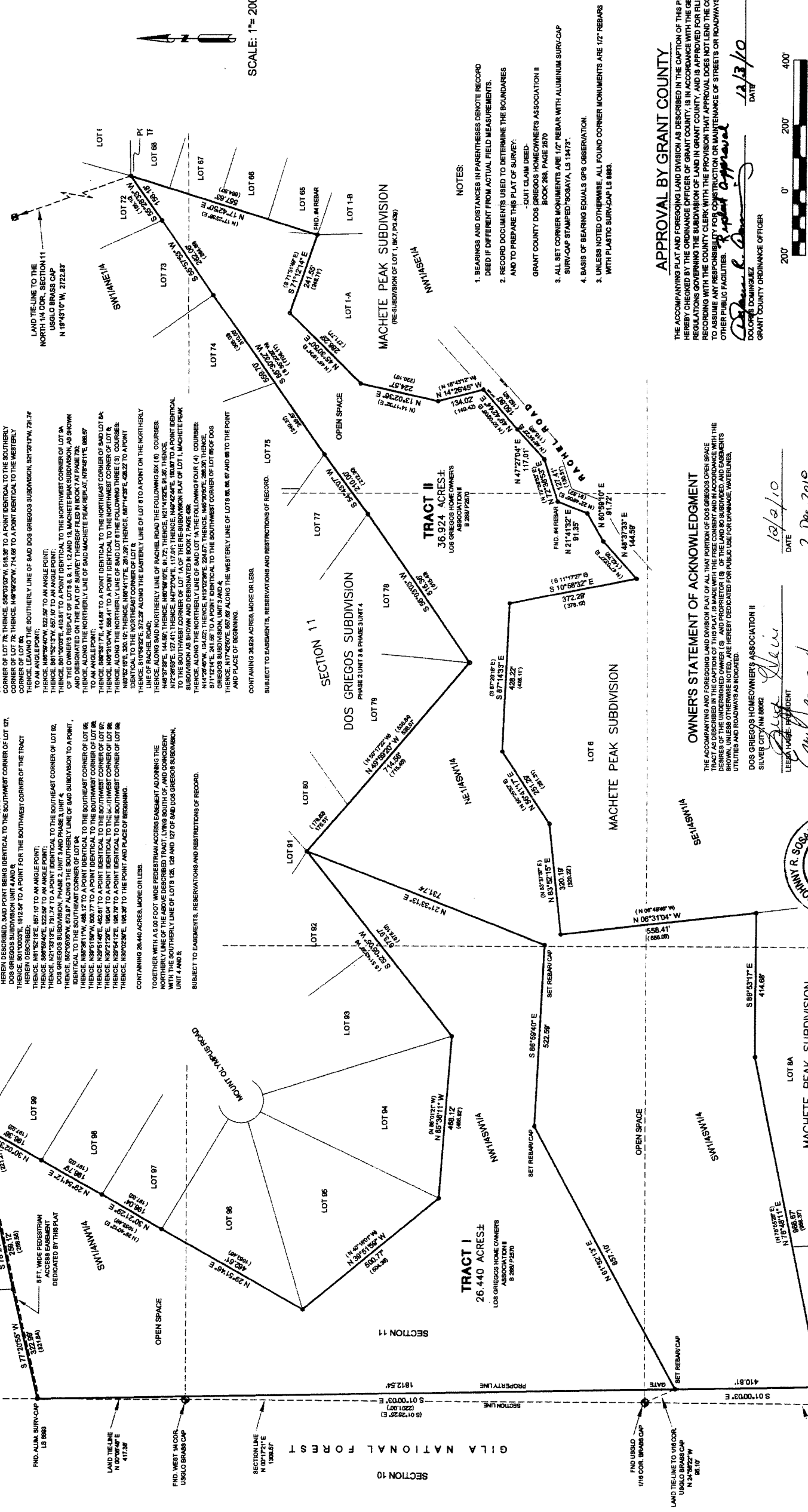


LAND DIVISION
 PLAT OF SURVEY
 OF
GRANT COUNTY DOS GREGIOS HOMEOWNER'S ASSOCIATION II
OPEN SPACE
TRACT I AND TRACT II

SECTION 11, T. 17 S., R. 14 W., N.M.P.M., GRANT COUNTY, NEW MEXICO



TRACT I
 A TRACT OF LAND SITUATE IN THE SW1/4SW1/4, NW1/4SW1/4, NE1/4SW1/4 AND THE SW1/4SW1/4 OF SECTION 11, T. 17 S., R. 14 W., N.M.P.M., GRANT COUNTY, NEW MEXICO, BEING MORE PARTICULARLY DESCRIBED BY METES AND BOUNDS AS FOLLOWS: TO WIT:
 BEGINNING AT A POINT FOR THE NORTHERLY CORNER OF THE TRACT HEREIN DESCRIBED, SAID POINT BEING IDENTICAL TO THE SOUTHWEST CORNER OF LOT 124, DOS GREGIOS SUBDIVISION, PHASE 4, UNITS 5 & 8, AND PHASE 3, UNIT 4, AS SHOWN AND DESIGNATED ON SAID SUBDIVISION PLAT THEREOF, FILED IN BOOK 11, PAGE 881, WHEREBY THE NORTH 1/4 CORNER OF SECTION 11, T. 17 S., R. 14 W., N.M.P.M., GRANT COUNTY, NEW MEXICO, IS CORNERED BY METES AND BOUNDS AS FOLLOWS: TO WIT:
 BEGINNING AT A POINT FOR THE NORTHERLY CORNER OF LOT 124, THENCE S77°20'55" W. 322.39' (121.14) TO AN ALGEBRAIC POINT;
 THENCE N10°52'17" E. 87.19' TO AN ANGLE POINT;
 THENCE N12°33'17" E. 78.17' TO A POINT IDENTICAL TO THE SOUTHWEST CORNER OF LOT 87, DOS GREGIOS SUBDIVISION, PHASE 2, UNITS 3 AND PHASE 3, UNIT 4, AS SHOWN AND DESIGNATED ON SAID SUBDIVISION PLAT THEREOF, FILED IN BOOK 11, PAGE 881, WHEREBY THE NORTH 1/4 CORNER OF SECTION 11, T. 17 S., R. 14 W., N.M.P.M., GRANT COUNTY, NEW MEXICO, IS CORNERED BY METES AND BOUNDS AS FOLLOWS: TO WIT:
 BEGINNING AT A POINT FOR THE NORTHERLY CORNER OF LOT 86, THENCE S77°20'55" W. 296.12' TO A POINT IDENTICAL TO THE SOUTHWEST CORNER OF LOT 127, DOS GREGIOS SUBDIVISION, UNIT 4 AND 8;
 THENCE S77°20'55" W. 296.12' TO A POINT IDENTICAL TO THE SOUTHWEST CORNER OF LOT 127, DOS GREGIOS SUBDIVISION, UNIT 4 AND 8;
 THENCE S77°20'55" W. 296.12' TO A POINT IDENTICAL TO THE SOUTHWEST CORNER OF LOT 127, DOS GREGIOS SUBDIVISION, UNIT 4 AND 8;
 THENCE S77°20'55" W. 296.12' TO A POINT IDENTICAL TO THE SOUTHWEST CORNER OF LOT 127, DOS GREGIOS SUBDIVISION, UNIT 4 AND 8;
 THENCE S77°20'55" W. 296.12' TO A POINT IDENTICAL TO THE SOUTHWEST CORNER OF LOT 127, DOS GREGIOS SUBDIVISION, UNIT 4 AND 8;
 CONTAINING 26.440 ACRES, MORE OR LESS.
 SUBJECT TO EASEMENTS, RESERVATIONS AND RESTRICTIONS OF RECORD.

TRACT II
 A TRACT OF LAND SITUATE IN THE SW1/4SW1/4, NW1/4SW1/4, NE1/4SW1/4 AND THE SW1/4SW1/4 OF SECTION 11, T. 17 S., R. 14 W., N.M.P.M., GRANT COUNTY, NEW MEXICO, BEING MORE PARTICULARLY DESCRIBED BY METES AND BOUNDS AS FOLLOWS: TO WIT:
 BEGINNING AT A POINT FOR THE NORTHERLY CORNER OF THE TRACT HEREIN DESCRIBED, SAID POINT BEING IDENTICAL TO THE SOUTHWEST CORNER OF LOT 124, DOS GREGIOS SUBDIVISION, PHASE 4, UNITS 5 & 8, AND PHASE 3, UNIT 4, AS SHOWN AND DESIGNATED ON SAID SUBDIVISION PLAT THEREOF, FILED IN BOOK 11, PAGE 881, WHEREBY THE NORTH 1/4 CORNER OF SECTION 11, T. 17 S., R. 14 W., N.M.P.M., GRANT COUNTY, NEW MEXICO, IS CORNERED BY METES AND BOUNDS AS FOLLOWS: TO WIT:
 BEGINNING AT A POINT FOR THE NORTHERLY CORNER OF LOT 124, THENCE S77°20'55" W. 296.12' TO A POINT IDENTICAL TO THE SOUTHWEST CORNER OF LOT 127, DOS GREGIOS SUBDIVISION, UNIT 4 AND 8;
 THENCE S77°20'55" W. 296.12' TO A POINT IDENTICAL TO THE SOUTHWEST CORNER OF LOT 127, DOS GREGIOS SUBDIVISION, UNIT 4 AND 8;
 THENCE S77°20'55" W. 296.12' TO A POINT IDENTICAL TO THE SOUTHWEST CORNER OF LOT 127, DOS GREGIOS SUBDIVISION, UNIT 4 AND 8;
 THENCE S77°20'55" W. 296.12' TO A POINT IDENTICAL TO THE SOUTHWEST CORNER OF LOT 127, DOS GREGIOS SUBDIVISION, UNIT 4 AND 8;
 THENCE S77°20'55" W. 296.12' TO A POINT IDENTICAL TO THE SOUTHWEST CORNER OF LOT 127, DOS GREGIOS SUBDIVISION, UNIT 4 AND 8;
 CONTAINING 36.924 ACRES, MORE OR LESS.
 SUBJECT TO EASEMENTS, RESERVATIONS AND RESTRICTIONS OF RECORD.

- NOTES:
1. BEARINGS AND DISTANCES IN PARENTHESES DENOTE RECORD DEED IF DIFFERENT FROM ACTUAL FIELD MEASUREMENTS.
 2. RECORD DOCUMENTS USED TO DETERMINE THE BOUNDARIES AND TO PREPARE THIS PLAT OF SURVEY:
 3. GRANT COUNTY DOS GREGIOS HOMEOWNERS ASSOCIATION II BOOK 266, PAGE 2670
 4. BASIS OF BEARING EQUALS GPS OBSERVATION.
 5. UNLESS NOTED OTHERWISE, ALL FOUND CORNER MONUMENTS ARE 1/2" REBAR WITH PLASTIC SURVEY CAP.

APPROVAL BY GRANT COUNTY

THE ACCOMPANYING PLAT AND FOREGOING LAND DIVISION AS DESCRIBED IN THE CAPTION OF THIS PLAT, HEREBY CHECKED BY THE ORDINANCE OFFICER OF GRANT COUNTY, IS IN ACCORDANCE WITH THE GENERAL REGULATIONS GOVERNING THE SUBDIVISION OF LAND IN GRANT COUNTY, AND IS APPROVED FOR FILING AND RECORDING WITH THE COUNTY CLERK WITH THE PROVISION THAT APPROVAL DOES NOT LEND THE COUNTY TO LIABILITY FOR CONSTRUCTION OF THE SUBDIVISION OR MAINTENANCE OF STREETS OR ROADWAYS, OR OTHER PUBLIC FACILITIES.
 APPROVED: *[Signature]* 12/3/10
 DATE: 12/3/10
 ORDER: DOMINGUEZ
 GRANT COUNTY ORDINANCE OFFICER



OWNERS STATEMENT OF ACKNOWLEDGMENT

THE ACCOMPANYING AND FOREGOING LAND DIVISION PLAT OF ALL THAT PORTION OF DOS GREGIOS OPEN SPACE SUBDIVISION, PHASE 4, UNITS 5 & 8, AND PHASE 3, UNIT 4, AS SHOWN AND DESIGNATED ON SAID SUBDIVISION PLAT THEREOF, FILED IN BOOK 11, PAGE 881, WHEREBY THE NORTH 1/4 CORNER OF SECTION 11, T. 17 S., R. 14 W., N.M.P.M., GRANT COUNTY, NEW MEXICO, IS CORNERED BY METES AND BOUNDS AS FOLLOWS: TO WIT:
 BEGINNING AT A POINT FOR THE NORTHERLY CORNER OF THE TRACT HEREIN DESCRIBED, SAID POINT BEING IDENTICAL TO THE SOUTHWEST CORNER OF LOT 124, DOS GREGIOS SUBDIVISION, PHASE 4, UNITS 5 & 8, AND PHASE 3, UNIT 4, AS SHOWN AND DESIGNATED ON SAID SUBDIVISION PLAT THEREOF, FILED IN BOOK 11, PAGE 881, WHEREBY THE NORTH 1/4 CORNER OF SECTION 11, T. 17 S., R. 14 W., N.M.P.M., GRANT COUNTY, NEW MEXICO, IS CORNERED BY METES AND BOUNDS AS FOLLOWS: TO WIT:
 BEGINNING AT A POINT FOR THE NORTHERLY CORNER OF LOT 124, THENCE S77°20'55" W. 296.12' TO A POINT IDENTICAL TO THE SOUTHWEST CORNER OF LOT 127, DOS GREGIOS SUBDIVISION, UNIT 4 AND 8;
 THENCE S77°20'55" W. 296.12' TO A POINT IDENTICAL TO THE SOUTHWEST CORNER OF LOT 127, DOS GREGIOS SUBDIVISION, UNIT 4 AND 8;
 THENCE S77°20'55" W. 296.12' TO A POINT IDENTICAL TO THE SOUTHWEST CORNER OF LOT 127, DOS GREGIOS SUBDIVISION, UNIT 4 AND 8;
 THENCE S77°20'55" W. 296.12' TO A POINT IDENTICAL TO THE SOUTHWEST CORNER OF LOT 127, DOS GREGIOS SUBDIVISION, UNIT 4 AND 8;
 THENCE S77°20'55" W. 296.12' TO A POINT IDENTICAL TO THE SOUTHWEST CORNER OF LOT 127, DOS GREGIOS SUBDIVISION, UNIT 4 AND 8;
 CONTAINING 36.924 ACRES, MORE OR LESS.
 SUBJECT TO EASEMENTS, RESERVATIONS AND RESTRICTIONS OF RECORD.

DOS GREGIOS HOMEOWNERS ASSOCIATION II
 SILVER CITY, NM 88002
 LEEBA HADGE, PRESIDENT
 ERNE TERAZAS, VICE PRESIDENT
 DANIEL GROSS, SECRETARY/TREASURER
 DATE: 12/2/10
 DATE: 2 Dec 2010
 DATE: 2 Dec 2010



SURVEYOR'S CERTIFICATION

I, JOHNNY R. SOSAYA, NEW MEXICO PROFESSIONAL SURVEYOR NO. 13473, DO HEREBY CERTIFY THAT THIS LAND DIVISION PLAT AND THE ACTUAL SURVEY ON THE GROUND UPON WHICH IT IS BASED WAS PREPARED BY ME OR UNDER MY DIRECT SUPERVISION; THAT I AM RESPONSIBLE FOR THIS SURVEY; THAT THIS SURVEY MEETS THE MINIMUM STANDARDS FOR SURVEYING IN THE STATE OF NEW MEXICO, AND THAT IT IS TRUE AND CORRECT TO THE BEST OF MY KNOWLEDGE AND BELIEF.

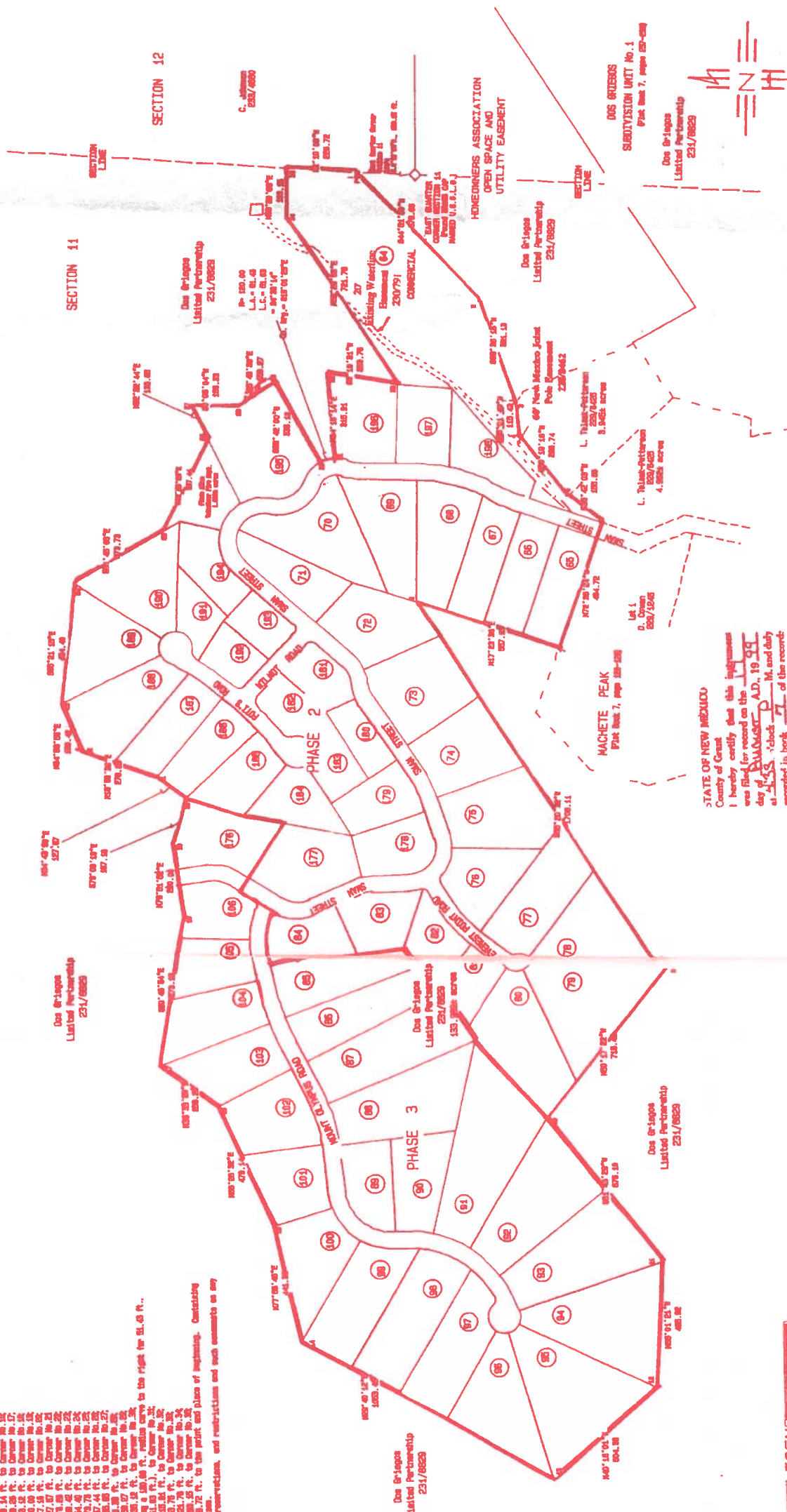
[Signature]
 JOHNNY R. SOSAYA, NMPS 13473
 DATE: 11/17/10

INDEXING INFORMATION FOR COUNTY CLERK	
LAND DIVISION PLAT OF SURVEY OF GRANT COUNTY DOS GREGIOS HOMEOWNERS ASSOCIATION II - OPEN SPACE AREAS - TRACTS I AND II SECTION 11, T. 17 S., R. 14 W., N.M.P.M. GRANT COUNTY, NEW MEXICO SOSAYA SURVEYING P.O. BOX 1483, BAYARD, NEW MEXICO, 88023 (575) 537-2328	
DATE OF FIELD WORK NOV 2010	DRAWN BY JFB
PROJECT ORIGINS.DWG	SHEET OF 1

Plat of Survey
of
DOS GRIEGOS SUBDIVISION
PHASE NO. 2 UNIT NO. 3 and PHASE NO. 3 UNIT NO. 4

A 133.969 acre tract of land situated in the NE1/4SE1/4, NW1/4SE1/4, NE1/4SW1/4, NW1/4SW1/4, SE1/4SW1/4, SW1/4SW1/4, S1/2SW1/4, and the SE1/4NE1/4 of Section 11 T. 26S., R. 16E., N.M.P.M., Grant County, New Mexico.

1.33.969 acre tract of land situated in the NE1/4SE1/4, NW1/4SE1/4, NE1/4SW1/4, NW1/4SW1/4, SE1/4SW1/4, SW1/4SW1/4, S1/2SW1/4, and the SE1/4NE1/4 of Section 11 T. 26S., R. 16E., N.M.P.M., Grant County, New Mexico. This survey was made by the Surveyor of Grant County, New Mexico, on the 12th day of January, 1988, in accordance with the Statutes of the State of New Mexico.



LEGEND
 [Symbol] Iron and steel
 [Symbol] Station
 [Symbol] Monument found
 Record measurements in bold type.
 Field measurements in small type.

Description	REG.	DATE	REC.	BOOK
Dos Griegos Subdivision		March 28, 1988	Book 251	Page 103
Monarch Peak		Oct. 28, 1988	Book 251	Page 107
Dos Griegos PL		Feb. 1, 1988	Book 251	Page 105
D. Oro		March 1, 1988	Book 251	Page 105
L. Pedraza		Apr. 12, 1988	Book 251	Page 105

I, William Eric Miller, a duly licensed Professional Land Surveyor in the State of New Mexico, do hereby certify that I conducted this survey in accordance with the Statutes of this State and that this survey was made in accordance with the Statutes of the State of New Mexico. This survey was made for the purpose of showing the location of the proposed road and utility easements shown on this plat. My commission expires on the 31st day of December, 1993.

William Eric Miller
 William Eric Miller
 State of New Mexico

NOTE:
 Except as shown
 All corners
 are Set 1/2" Miller/Yellow Plastic Caps
 Marked MILLER L.S. 8893

Uniform Parcel Code Numbers

Phase 2	3-000-000	528-643
Unit 3	3-000-000	528-644
Phase 3	3-000-000	528-645
Unit 4	3-000-000	528-646

STATE OF NEW MEXICO
 County of Grant
 I hereby certify that this instrument was filed for record on the 12th day of January, A.D., 1988, at 1:55 o'clock P.M. and duly recorded in Book 251 of the records of Grant County, New Mexico.

William Eric Miller
 Surveyor

MILLER SURVEYS
 William Eric Miller
 P.O. Box 1000
 902 West Market Street
 Blythe City, NM
 88502-1000
 Telephone 885-2322

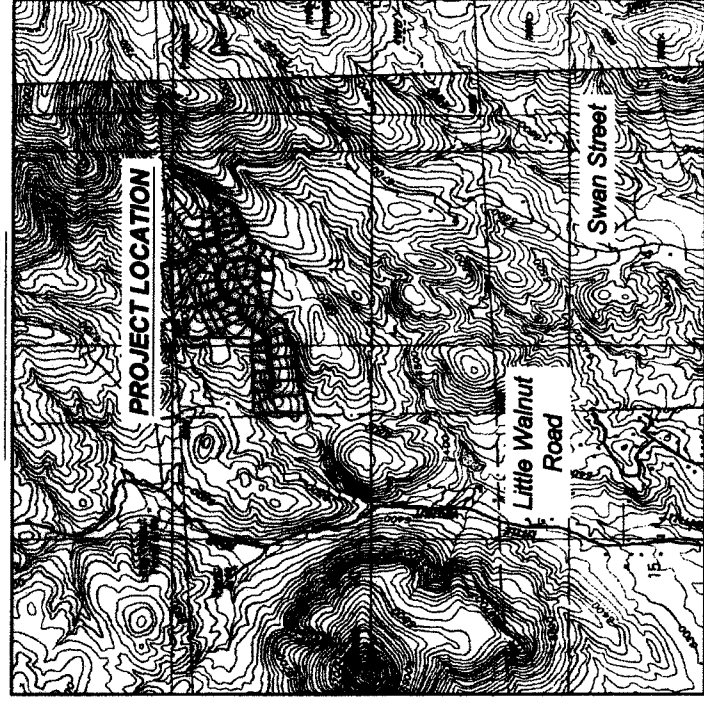
February 15, 1988 Job No. 88-344



LEGAL DESCRIPTION:

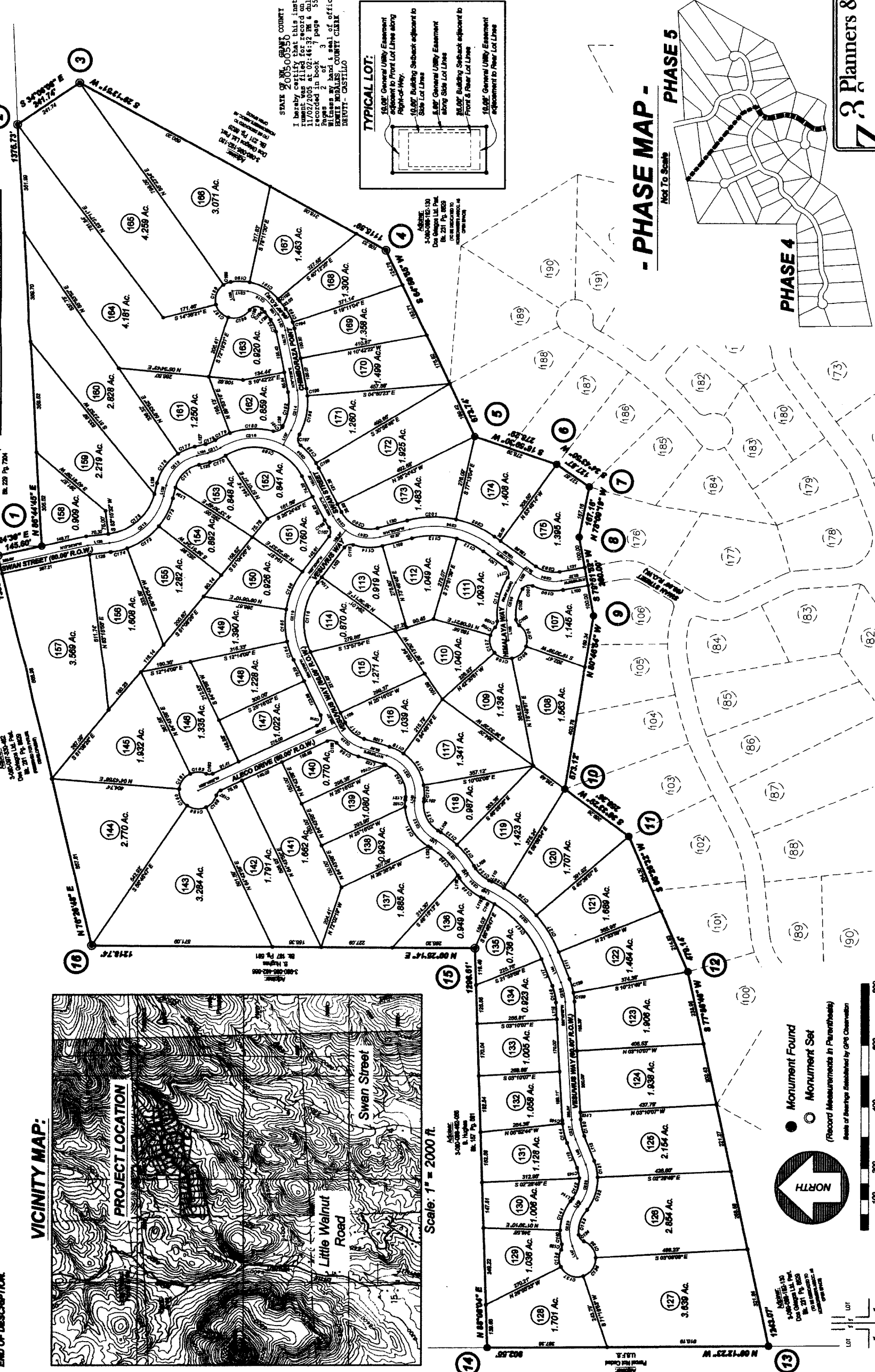
DOS GREGOS SUBDIVISION; PHASE NO. 4 UNIT NO. 8 and PHASE NO. 5 UNIT NO. 6
 A 116.530 ACRE RESIDENTIAL SUBDIVISION SITUATE WITHIN THE SE1/4SW1/4 OF SECTION 2, AND THE NE1/4NE1/4, NW1/4NE1/4, NE1/4NW1/4, SW1/4NE1/4, SE1/4NW1/4, & NW1/4SW1/4 OF SECTION 11, TOWNSHIP 17 SOUTH, RANGE 14 WEST, NEW MEXICO PRINCIPAL MERIDIAN, GRANT COUNTY, NEW MEXICO, BEING MORE PARTICULARLY DESCRIBED AS FOLLOWS:
 beginning at Corner #1, being identical to the North Quarter Corner of Section 11; Thence N 86°44'45" E a distance of 1376.73' to Corner #2; Thence S 34°06'08" E a distance of 241.74' to Corner #3; Thence S 23°13'51" W a distance of 1116.56' to Corner #4; Thence S 64°59'55" W a distance of 673.74' to Corner #5; Thence S 18°59'37" W a distance of 278.29' to Corner #6; Thence S 34°43'50" W a distance of 127.87' to Corner #7; Thence N 78°09'19" W a distance of 187.16' to Corner #8; Thence S 79°51'52" W a distance of 280.00' to Corner #9; Thence N 80°48'54" W a distance of 573.12' to Corner #10; Thence S 36°33'29" W a distance of 269.28' to Corner #11; Thence S 66°20'32" W a distance of 476.14' to Corner #12; Thence S 77°05'49" W a distance of 1243.07' to Corner #13; Thence N 00°12'23" W a distance of 902.65' to Corner #14; Thence N 88°08'04" E a distance of 1266.51' to Corner #15; Thence N 00°28'14" E a distance of 1218.74' to Corner #16; Thence N 78°28'48" E a distance of 1306.80' to Corner #17; Thence S 12°24'30" E a distance of 145.60' to Corner #1, the point of beginning of this tract.
 Containing an area of 5,076,060.52 square feet, 116.530 Acres more or less.
 Subject to easements, reservations, and restrictions and such easements as may exist on the ground.
END OF DESCRIPTION.

VICINITY MAP:



Documents Used in This Survey	
Description	Rec. Date Rec. Location
Dos Gregos	March 28, 1986 Bk. 231, Pg. 8829
Dos Gregos	March 28, 1986 Bk. 254, Pg. 5449
Dos Gregos	April 25, 2000 Bk. 284, Pg. 5449
P.A. Ranch Part.	March 17, 1982 Bk. 229, Pg. 1244
B. Hughes	Aug. 18, 1974 Bk. 187, Pg. 581
Dos Gregos #1	July 12, 1988 Bk. 7, Pg. 147-152
Dos Gregos (Amend.)	June 19, 1987 Bk. 7, Pg. 147-152
Dos Gregos (Cor.)	Feb. 7, 1989 Bk. 7, Pg. 237-239
Dos Gregos 2 & 3	Aug. 17, 1989 Bk. 7, Pg. 280-283
Machette Park	Oct. 20, 1985 Bk. 7, Pg. 128-128

Uniform Parcel Code Numbers	
Dos Gregos	3-080-088-192-130
Dos Gregos	3-080-087-132-522
Dos Gregos	3-080-087-330-462
P.A. Ranch Part.	3-080-087-132-400
B. Hughes	3-080-088-462-088
U.S.F.S.	No U.P.C.



STATE OF NEW MEXICO COUNTY OF GRANT COUNTY
 I hereby certify that this instrument was filed for record on 11/02/2005 at 02:46:32 PM & duly recorded in Book 3 page 331

